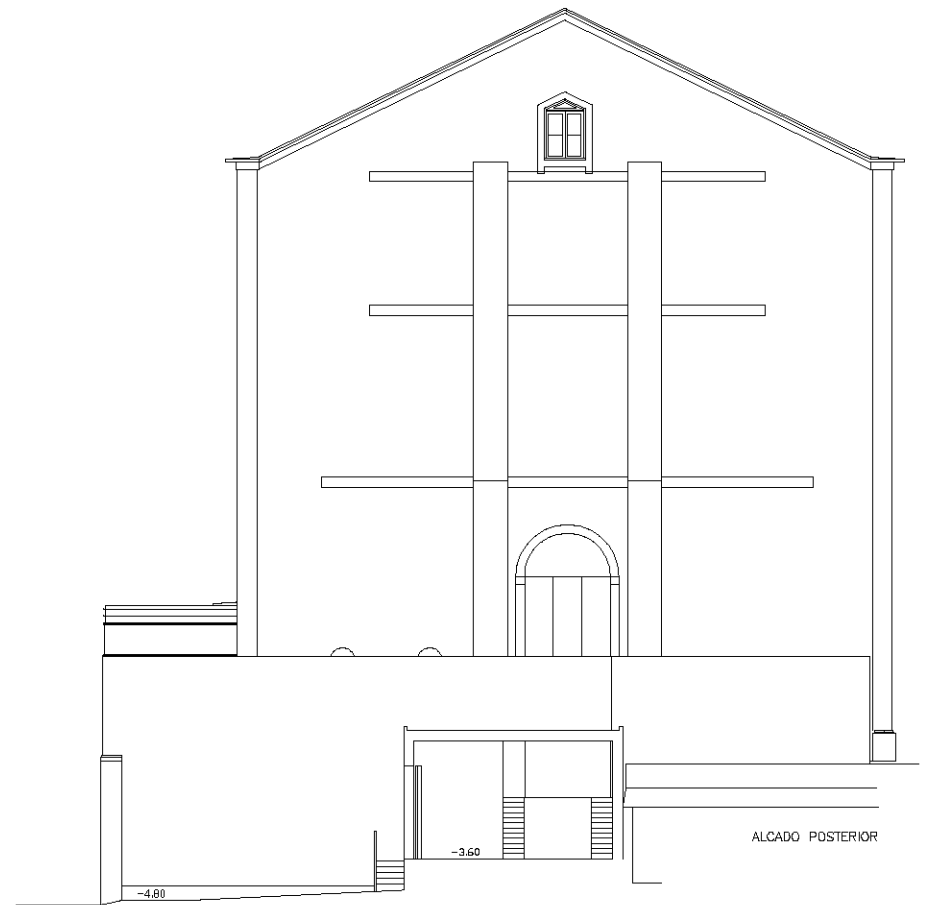




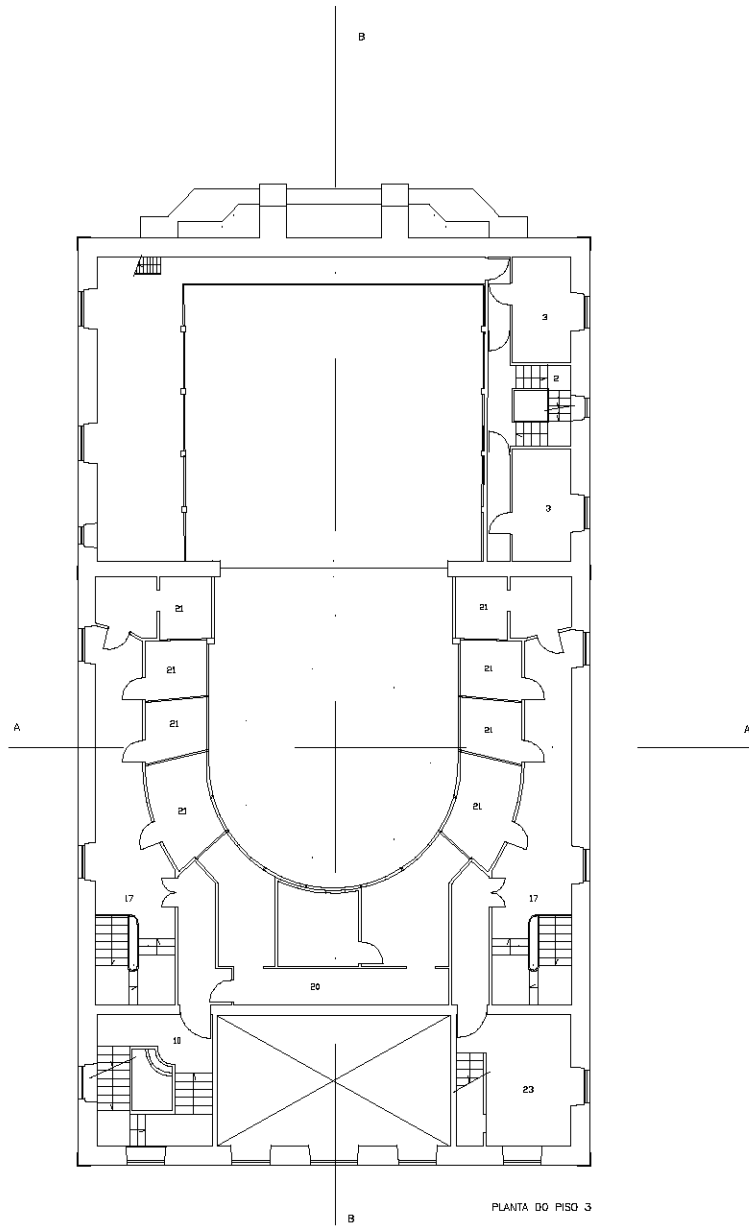
ALCADO PRINCIPAL



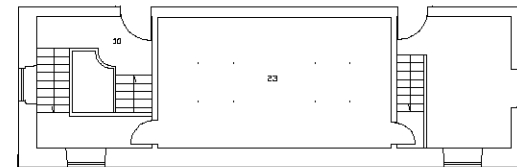
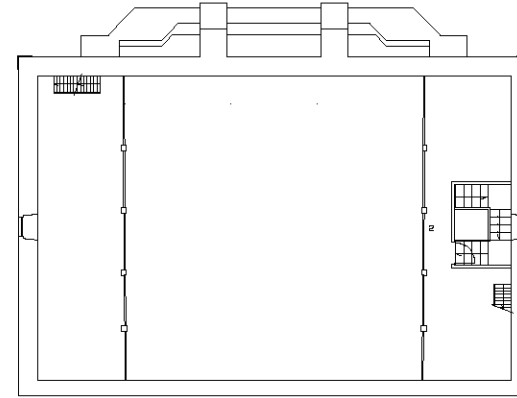
ALCADO POSTERIOR

-4.80

-3.60

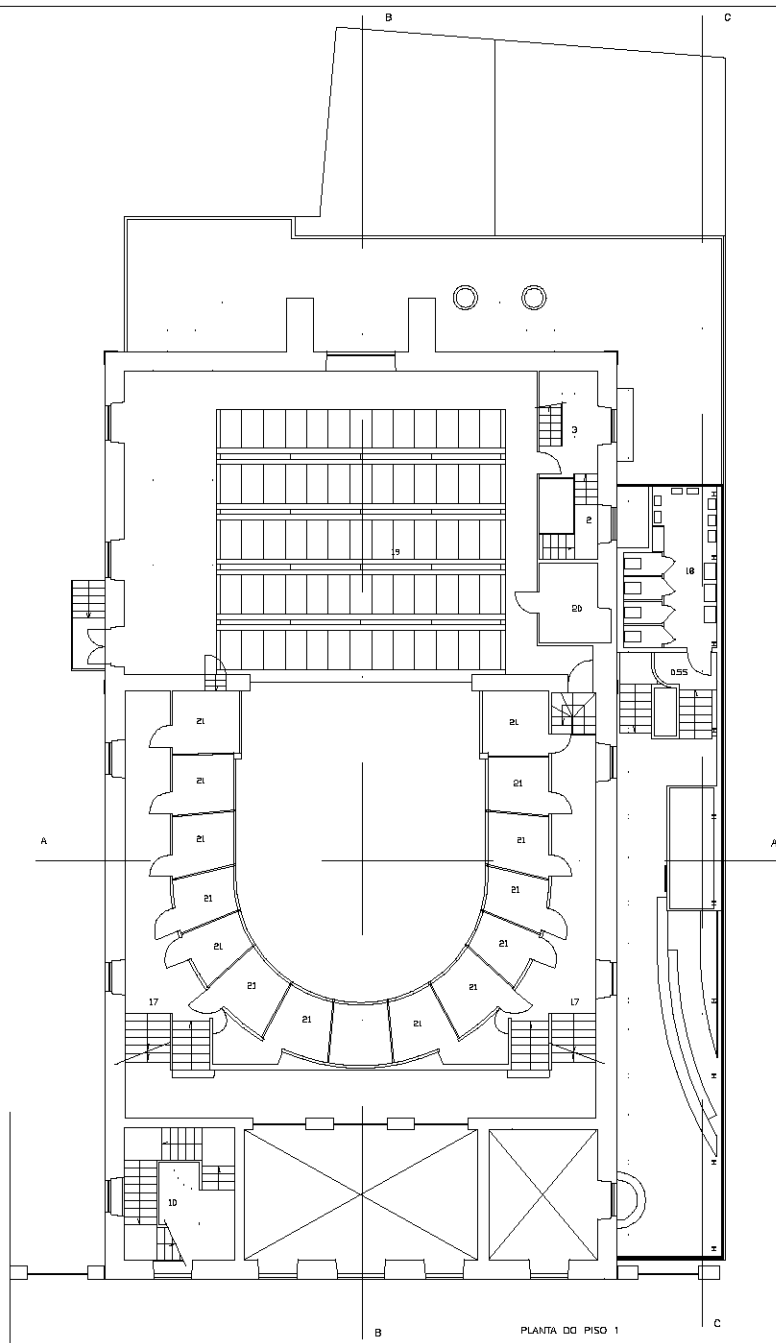


PLANTA DO PISO 3

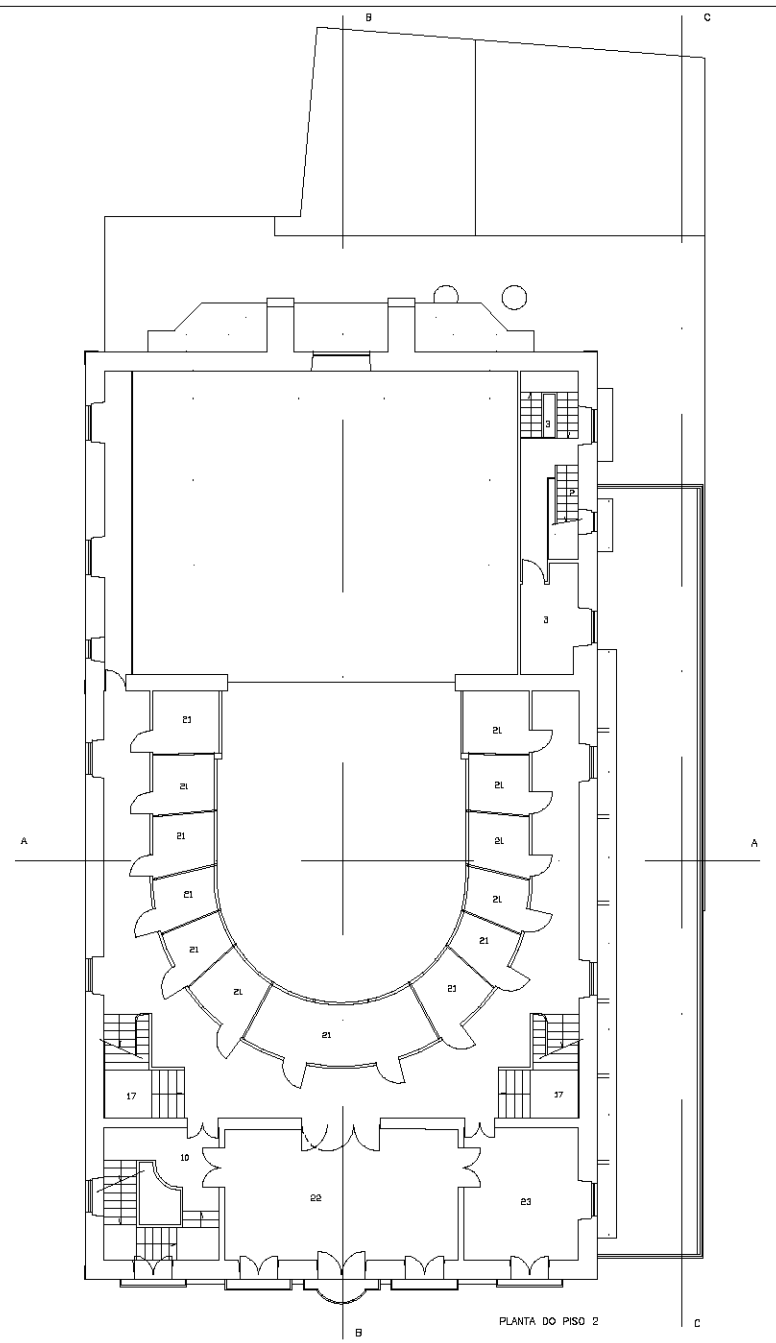


LEGENDA :

- 1:Sub-Palco 2:Acesso Vertical I 3:Arrumos 4:Acesso Vertical II 5:1.S./Camarim 6:Camarim 7:Armazem 8:Recepção 9:Vestibulo 10:Acesso Vertical III
 11:Balneário 12:Plateia 13:Bar 14:Copa/Bar 15:1.S.Defeclantes Mtores 16:1.S./Senhoras 17:Acesso Vertical IV 18:1.S./Homens 19:Palca 20:Cabina Técnica e de Projecção
 21:Camarote 22:Salão 23:Gabinete



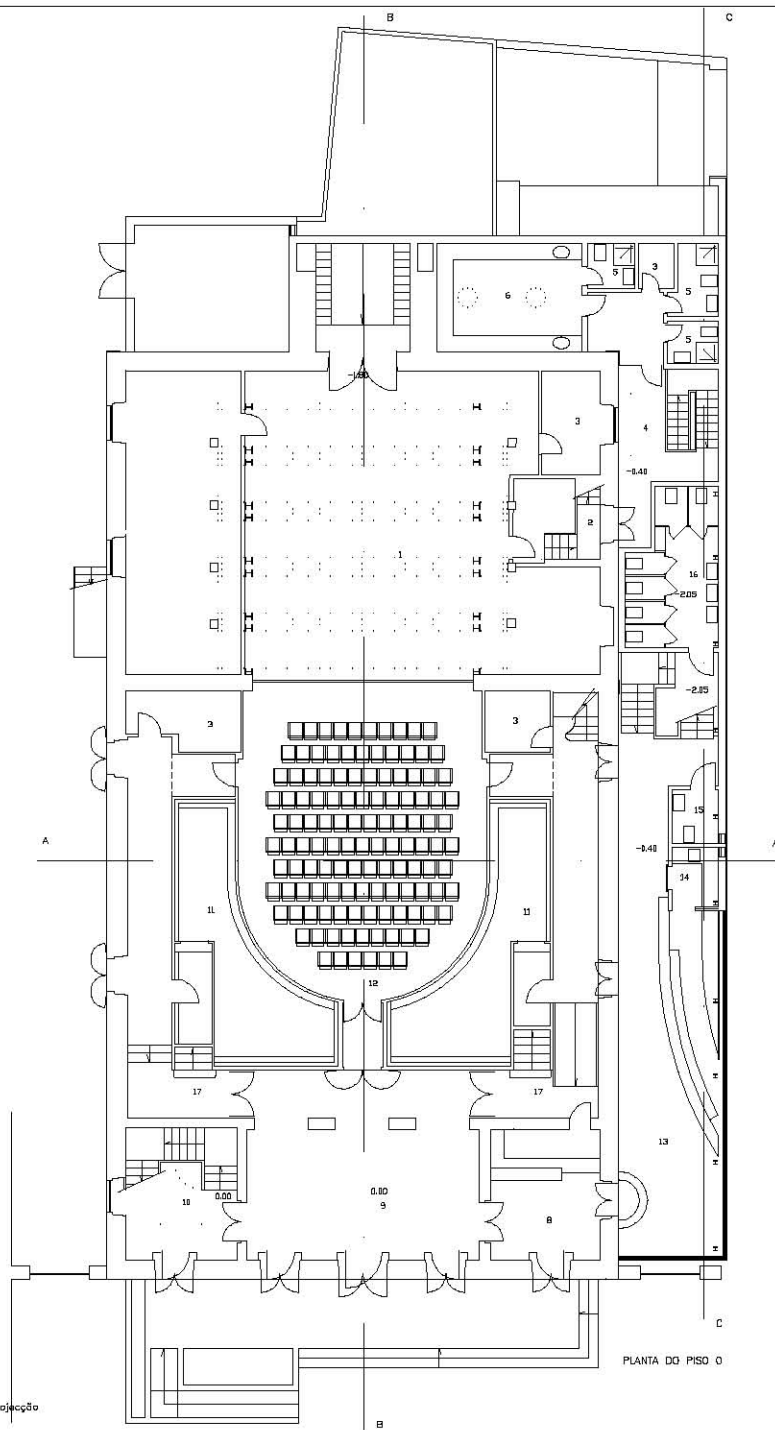
PLANTA DO PISO 1



PLANTA DO PISO 2

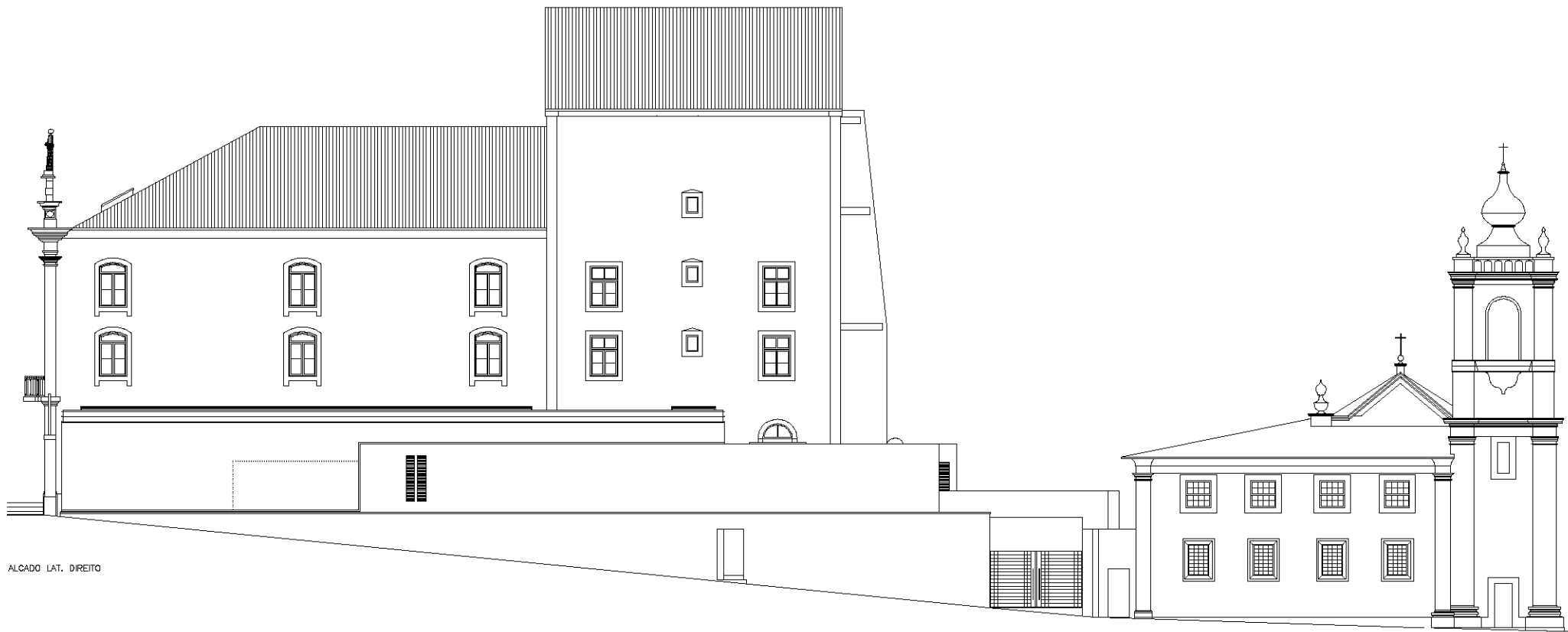
LEGENDA :

- 1:Sub-Palco 2: Acesso Vertical I 3:Arrumos 4:Acesso Vertical II 5:LS./Camarim 6:Camarim 7:Armazem 8:Recepção 9:Vestibulo 10:Acesso Vertical III
 11:Balconete 12:Platao 13:Bar 14:Copa/Bar 15:I.S./Defecantes Matores 16:I.S./Senhoras 17:Acesso Vertical IV 18:I.S./Homens 19:Palca 20:Cabina Técnica e de Projacção
 21:Camarote 22:Sala 23:Gabinete



LEGENDA :

- 1:Sub-Palco 2:Acesso Vertical I 3:Arrumos 4:Acesso Vertical II 5:I.S./Camarim 6:Camarim 7:Armazem 8:Recepção 9:Vestibulo 10:Acesso Vertical III
 11:Bangaleira 12:Plateia 13:Bar 14:Copa/Bar 15:I.S.Deficientes Motores 16:I.S./Senhoras 17:Acesso Vertical IV 18:I.S./Homens 19:Palca 20:Cabina Técnica e de Projecção
 21:Camarote 22:Salão 23:Gabinete



ALCADO LAT. DIREITO